

ESOURCE NEWSLETTER



IDENTITY THEFT AND MALICIOUS MALWARE AWARENESS

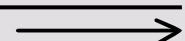
People are targeted by malware primarily through deceptive techniques like phishing emails, malicious website pop-ups, and disguised software downloads. Attackers exploit human error, such as clicking on malicious links, opening infected attachments, or using unpatched, vulnerable software to gain unauthorized access to devices, steal data, or deploy ransomware. (Continued, Page 2)



POWER SLOWLY RESTORED ACROSS MULTIPLE STATES AFTER WINTER STORM FERN

A Power restoration efforts continued across the South and Midwest Tuesday as utilities worked to recover from the widespread damage caused by Winter Storm Fern. Hundreds of thousands of customers have had electricity restored, according to tracking site PowerOutage.us, a significant improvement from the more than one million customers affected at the storm's peak.

Despite the progress, more than half a million customers remained without power Tuesday morning. (Continued, Page 2)



(Continued from page 1)

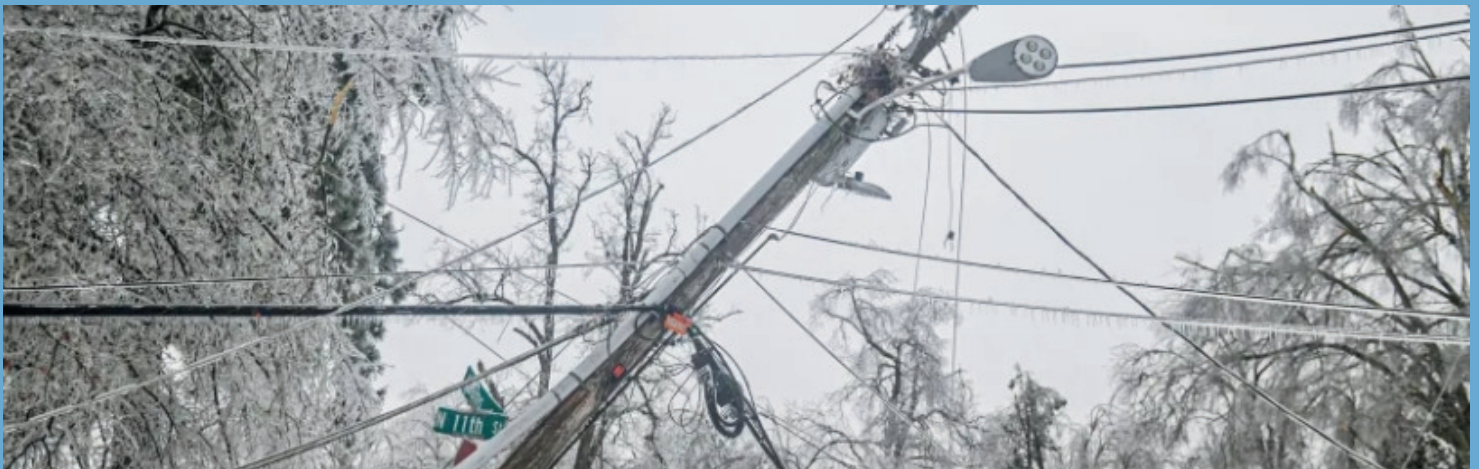
Here are the primary ways people are targeted:

- **Phishing Emails and Messages:** This is the most common method, involving fraudulent emails that appear to come from trusted sources (banks, colleagues) encouraging users to click links or download attachments containing malware.
- **Malicious Websites and Pop-ups:** Cybercriminals create fake sites or compromise legitimate ones, using pop-up ads that claim a user has a virus, tricking them into clicking "OK" to install malware
- **Drive-by Downloads:** Malware can infect a computer without the user's knowledge, simply by visiting a compromised website that exploits browser or system vulnerabilities.
- **Trojan Horses and Software Bundling:** Malicious code is disguised as legitimate software, such as free games or app updates.

- It is often bundled with free, third-party software downloads.
- **Infected Removable Drives:** Plugging in infected USB drives or external hard drives can automatically install malware.
- **Social Engineering:** Attackers use psychological manipulation, such as fake tech support phone calls (phishing), to convince users to install remote access software or download malicious files.

Key Indicators of a Malware Infection:

- Computer slowdowns, frequent freezing, or crashing.
- Browser homepage changes or unauthorized redirections.
- Excessive, unexpected pop-up advertisements.
- New, unknown browser toolbars or applications. (Continued, Page 3)



Tennessee reported roughly 175,000 outages, Mississippi about 140,000, and Louisiana just under 100,000. Record-setting cold temperatures are expected to persist through the week, complicating recovery efforts. Utility officials warned that additional outages remain possible. Trees and power lines already weakened by ice accumulation could still snap under continued strain.

In some areas, up to half an inch of ice was recorded across 12 states — an amount capable of adding as much as 500 pounds of weight to power lines. Strong winds may further increase the risk of damage.

The storm's impact has been widespread. While conditions remain dangerous, forecasters say many states are hoping for a gradual warming trend in the weeks ahead. -----

READ MORE



www.imea.com

(Continued from Page 2).

You should never:

- Open emails, launch links or open attachments from unknown sources
- Click on links in emails and pop-up messages
- Update payment information based on an email or other message without confirming the change with a known contact at your vendor or beneficiary
- Share your user ID, password, secure token device or the answers to your security questions with anyone
- Leave written notes with your log-in credentials nearby your computer or in an easy-to-find place where they can be viewed by others
- Leave inactive user profiles online
- Allow multiple people to use the same computer to process a transaction

Do not respond or reply to an email, phone call or text message that:

- Requires you to supply personal or account information (such as a user ID, password, or account numbers) directly in the email, non-secure webpage or text message
- Threatens to close or suspend your account if you do not take immediate action
- Invites you to answer a survey that asks you to enter personal or account information
- States your account has been compromised, there are unauthorized charges on your account, or there has been third-party activity on your account, and then asks you to provide or confirm your personal or account information
- Asks another user to log on from your computer
- Asks you to confirm, verify or refresh your account, password or billing information

DO:

- Pay special attention to links and attachments
- Always log off at the end of a session
- Go paperless so that statements with critical account information aren't sitting around in the office or in the trash
- Sign up for alerts to monitor account activity and review alerts whenever a payment is made or changed
- Keep anti-virus software up to date and use current versions of web browsers
- Regularly review and confirm the entitlements of your users

If you become suspicious after sending a wire transfer, immediately contact your respective Help Desk or Support team of your platform.

Reminder: It is NOT our practice to:

- Send emails that require you to enter personal security information directly into the email
- Send emails threatening to close your account if you do not take the immediate action of providing personal or business information
- Send emails asking you to reply by sending personal or business information
- Share your name with any contacts outside our organization in a manner inconsistent with our privacy policy

Knowledge and awareness are the strongest defense against fraud scams. Learn how to identify and prevent fraud at your company.

OnGuard Online

Practical tips from the federal government and the technology industry to help you secure your computer, be on guard against Internet fraud and protect your personal information.

Federal Trade Commission (FTC)

Learn about the appropriate steps to take to prevent and protect against identity theft. ----

IMEA MEMBER SERVICES & RESOURCES

- Education & Networking
- Safety & Training
- Legislative, Regulatory, and Limited Legal Assistance
- Lineman Apprentice Skills Training
- Mutual Aid
- DOL Journeyman Lineworker Apprentice Program
- Annual Business Meeting & Vendor Expo
- Educational Scholarships
- Joint Programs & Committees
- Public Relations
- Public Power Promotions
- Rate Services and Intervention
- News Publications
- Operation & Management
- Member Directory
- Website





IMEA
MUTUAL AID

NEIGHBORS
HELPING
NEIGHBORS



VISIT: WWW.IMEA.COM / MUTUAL AID

INDIANA MUNICIPAL ELECTRIC ASSOCIATION 2026 SCHOLARSHIP OPPORTUNITIES



2025 SCHOLARSHIP RECIPIENT
BRAXTON PIEPER
TOWN OF AVILLA

PURDUE UNIVERSITY
MAJOR: FINANCE



The Indiana Municipal Electric Association (IMEA) Educational Scholarship Program provides scholarships for up to six (6) college / tech school-bound seniors of IMEA municipal members for continuing education annually. The scholarship aid, in part, is designed to assist the student in attaining the education and skills necessary to compete in today's workforce as he/she works to become a productive and viable member of his/her community.

The \$1,000 scholarship, which is non-renewable, is made available in the spring of each year. The award notification will be presented to the student prior to graduation by a representative of the Indiana Municipal Electric Association. The scholarship will be issued at the end of the first year of college or completion of tech school as long as the student maintains a passing grade.

To learn more on eligibility requirements please click the link to register!

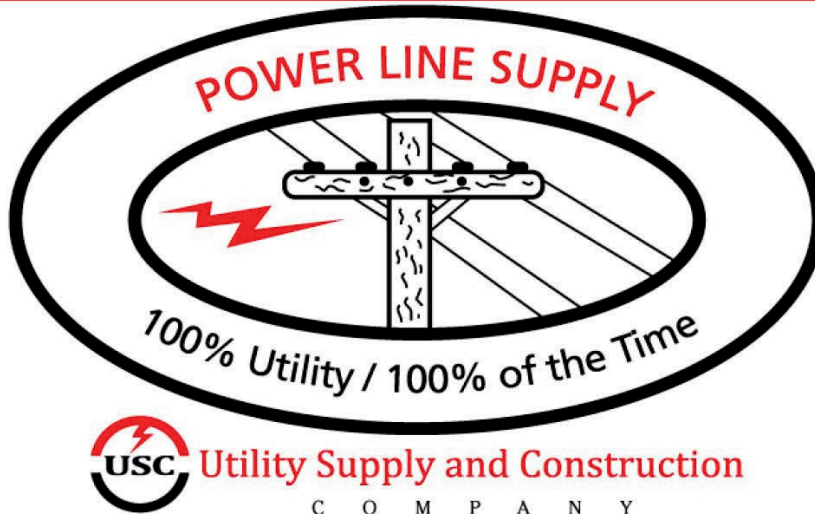
[CLICK HERE TO REGISTER!](#)



IMEA ASSOCIATE MEMBERS

**SUPPORTING THE MISSION FOR SUCCESS IN THE
ELECTRIC UTILITY INDUSTRY**

2026 SIGNATURE SPONSOR



Visit us on the web
at: www.uscco.com



YOUR FULL LINE UTILITY DISTRIBUTOR

- T & D Construction Material Supply
- Rubber Goods Testing & Certification
- Tool Sales and Repair
- Technical Sales & Service
- Inventory Management and Barcoding

Emergency Service 24 Hours a Day

800-832-2297

Shawn Matthews

VP Southern Region Technical Sales
231-679-2102

Mark Nuce

Account Manager
Northern Indiana/NW Ohio
317-417-7325

Jerrod Devers

Account Manager
Southern Indiana/Kentucky/SW Ohio
317-281-5904

WHY YOU SHOULD CHOOSE IMEA LINEMAN TRAINING INSTITUTE

- Better Student-to-Instructor Ratio at 10:1 versus larger schools
- Each lineman instructor has at least 20+ years of experience
- Diverse instructor staff. Many of our linemen have not only over 30 years' experience but are well versed in substation, overhead distribution, underground utility construction, and transmission.
- Our instructors are patient, knowledgeable, constructive, and collaborative with students-not adversarial.
- In-house FULL CDL training and testing facilities. This cannot be emphasized enough as obtaining a CDL is critical to job placement, and IMEA makes obtaining a CDL very easy and affordable versus other programs. MOST schools will help you only obtain the permit versus earning the entire CDL. We do ALL of the training and TESTING in-house, on-site.
- Job placement services and career planning services.
- IMEA is a Non-Profit Organization, unlike other schools so we can provide the same training at a significantly lower cost.
- On-site lodging.

*Indiana Municipal Electric
Association
Lineman Training Institute
Saint Joseph College Campus
1027 S. College Ave.
Rensselaer, IN. 47978
Contact Us
765.366.5506
IMEA Executive Director
Duane Richardson
Email: Duane@imea.com*

*Enrollment packages
available. Please visit:
www.imea.com / [lineman
training institute](http://linemantraininginstitute.com)*

INDIANA MUNICIPAL
ELECTRIC ASSOCIATION

LINEMAN TRAINING INSTITUTE

2026 Title Sponsor of IMEA
Lineman Training Institute

Milwaukee®

Nothing but **HEAVY DUTY®**



OUR PROFESSIONAL SERVICES



Personal Protection Equipment and Procedures

Students will learn about safety working procedures and personal protection equipment.



Electrical Systems

Students will learn the basics of the entire electrical system from generation through transmission, distribution, and conversion.



Basic Electricity

The students will be taught the fundamentals of practical and mathematical application of Direct Current and Alternating Current.



Transformers

Students will learn how and why transformers are used, banked, energized and the various configurations of both Delta and Wye.



Personal Protective Grounding

Students will learn how and why companies work on transmission and distribution lines as well as all equipment and methods used when working.



Rigging And Knot Tying

Students will learn how to tie specific knots, splice rope and learn the proper use of various ropes, slings, block and tackle.

Why Us?

Are You Ready To Begin Your Career Ahead Of Your Competitors?

Our lineman school program will allow you to begin your career ahead of all the rest. Our students have experience performing the jobs of a lineworker, as well as obtaining professional knowledge of the industry while they proceed through our program. Our students are well equipped to stand out from the interview to the actual job. Our program will provide an outlet for electric companies to search for new qualified applicants.

Our students will be able to enter the industry with the technical skills that their employers can't pass up!

Do you want to learn from Experienced and Knowledgeable Linemen?

The lineman school instructors at IMEA Lineman Training Institute have extensive real-world experience in power generation, transmission and distribution. Their exceptional understanding of the industry and what companies are looking for makes our program a cut above other school. Our students will have hands-on experience in the trade and be coached in problem-solving skills in order to help them excel in their work. Do you want to be able to graduate and have the opportunities for immediate positions anywhere? Then this trade is the right career for you. IMEA Lineman Training Institute provides its lineman school graduates with a listing of municipalities that will be useful in your search. Our instructor's connections with the leaders of the trade will also give the students of IMEA Lineman Training Institute the upper hand at finding a career. Our students will be trained, not only to look for the job, but to find jobs. A career planning class is required to help our students create a resume and learn to find their own jobs.

So is it what you're looking for?



Indiana Municipal Electric Association IMEA Lineman Training Institute

Duane Richardson

765.366.5506

Mailing Address

176 West Logan St. #225

Noblesville, IN. 46060

Our Location

1027 S. College Ave.

Rensselaer, IN. 47978